

State of Wyoming Corner Record

(In compliance with the **CORNER PERPETUATION AND FILING ACT**, Wyoming Statutes, 1997 Section 33-29-140 et. seq., and the Rules and Regulations of the Board of Professional Engineers and Professional Land Surveyors)

Reverse side of this form may be used if more space is needed.

Record of original survey and citation of source of historical information (if corner is lost or obliterated). Description of corner monumentation evidence found and/or monument and accessories established to perpetuate the location of this corner. Sketch of relative location of monument, accessories, and reference points with course and distance to adjacent corner(s) (if determined in this survey). Method and rationale for reestablishment of lost or obliterated corner.

ORIGINAL RECORD: Set a red sandstone 16"x8"x6" for 1/4 corner between 20 & 21.

FOUND: A stone

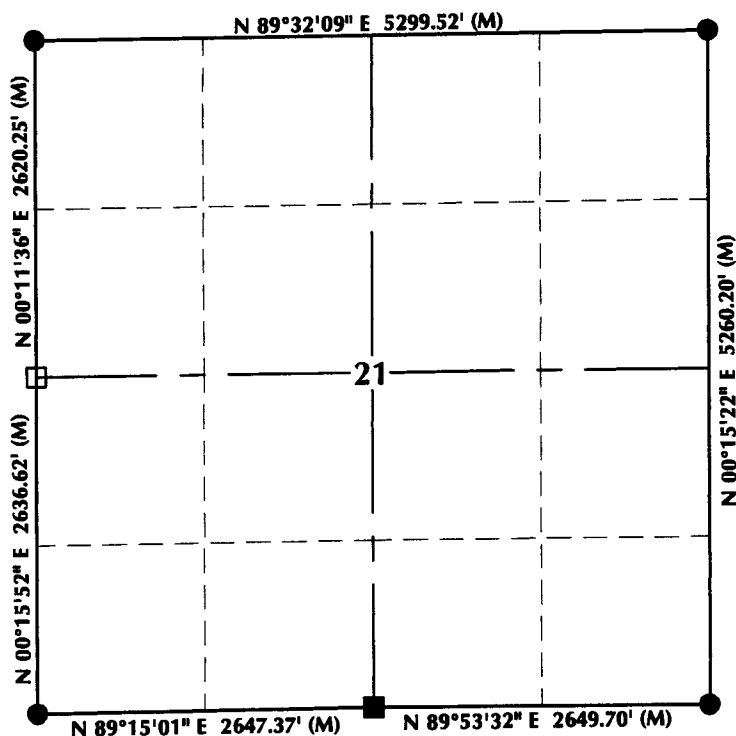
SET: Held stone



RECP #: 666103

RECORDED 7/27/2015 AT 12:23 PM BK# 2456 PG# 102
Debra K. Lathrop, CLERK OF LARAMIE COUNTY, WY PAGE 1 OF 1

Monument Location



Monument Inscription

NOTES:

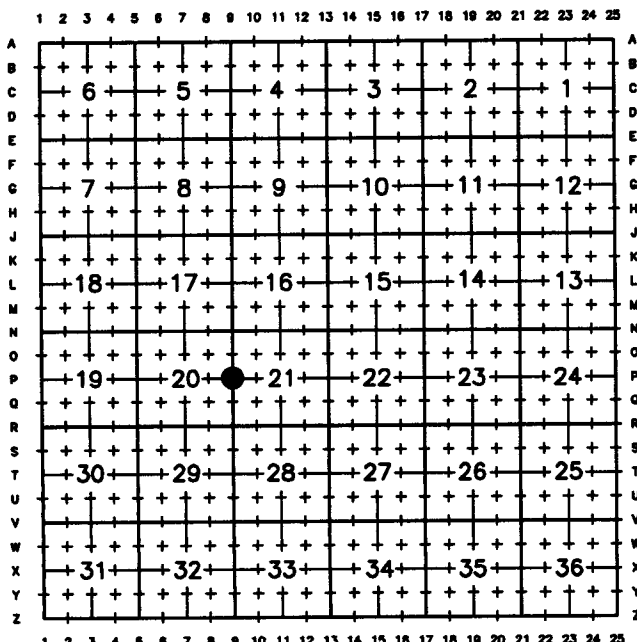
1. ▲ INDICATES FOUND BLM BRASS CAP
2. ■ INDICATES FOUND STONE
3. ● INDICATES FOUND ALUMINUM CAP
4. ◆ INDICATES SET ALUMINUM CAP
5. □ INDICATES SECTION CORNER PER CORNER RECORD
6. BASIS OF BEARING DERIVED FROM WYOMING COORDINATE SYSTEM NAD83 EAST ZONE
7. ALL MEASURED DISTANCES ARE GRID COMBINED SCALE FACTOR: .99971295
8. DRAWING NOT TO SCALE



Date of Field Work: 2/5/15

Office Reference: 14-49

Cross Index Plat



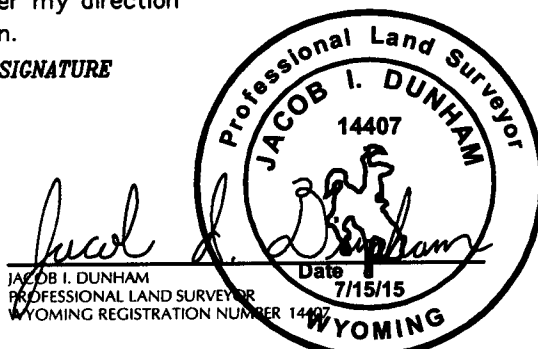
Land Surveyor/Firm/Address

609 Consulting, LLC
1095 Saberton Avenue
Sheridan, WY 82801

Telephone Number: 307-674-0609

This corner record was prepared by me or under my direction and supervision.

SEAL & SIGNATURE



Corner Name: West 1/4 Corner Section 21, T15N, R63W, 6th P.M. County: Laramie Wyoming

Cross-Index No.: P-9

SBRPEPLS/PLSW: March 1994; PLSW January 1998